

This document contains information proprietary to Magnum Fitness Systems. It is submitted in confidence and is to be used solely for the purpose for which it is furnished. This document and such information is not to be reproduced, transmitted, or used in whole or part without written authorization.

TOLERANCES: + 0.000"
- 1/16"

MAGNUM FITNESS SYSTEMS

2201 12th. Avenue
S. Milwaukee, WI, 53172

TITLE: 2036 - PEC / REAR DELT

UNLESS OTHERWISE SPECIFIED
DIMENSIONS ARE IN INCHES.

DRAWN BY:
R. Degenhardt

DATE:
01/28/05

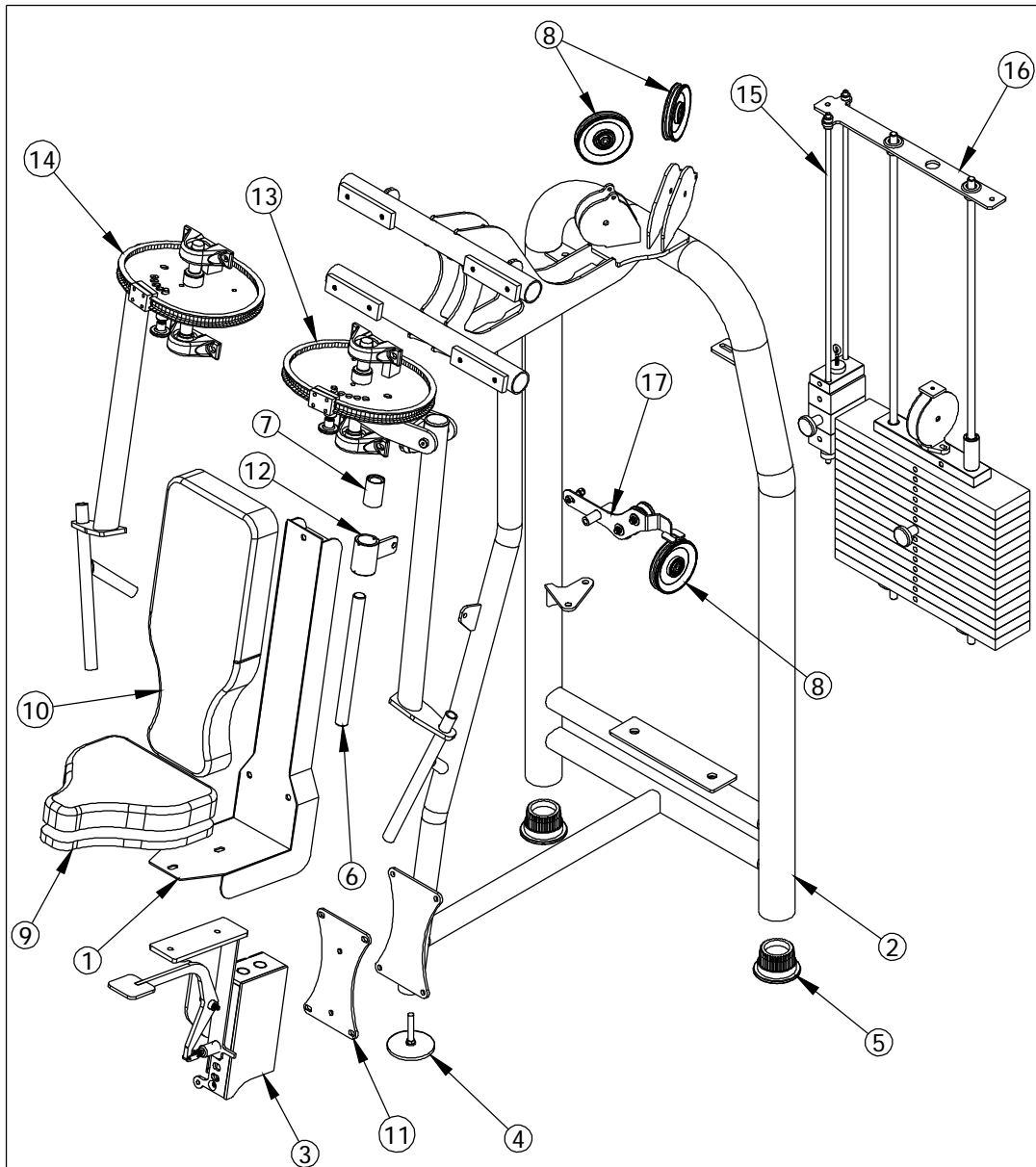
PART NO.
XXX-XXX

JOB NO.
XXXXXXXX

REV:
1

FILE LOCATION: C:\Cad Drawings\Solid Works\

1 OF 1



This document contains information proprietary to Magnum Fitness Systems. It is submitted in confidence and is to be used solely for the purpose for which it is furnished. This document and such information is not to be reproduced, transmitted, or used in whole or part without written authorization.

TOLERANCES: + 0.000"
- 1/16"

MAGNUM FITNESS SYSTEMS
2201 12th. Avenue
S. Milwaukee, WI, 53172

UNLESS OTHERWISE SPECIFIED
DIMENSIONS ARE IN INCHES.

TITLE: 2036 v 1.0
Pec/Rear Delt

DRAWN BY:
J. Wenzel

DATE:
07/02/04

PART NO.
XXX-XXX

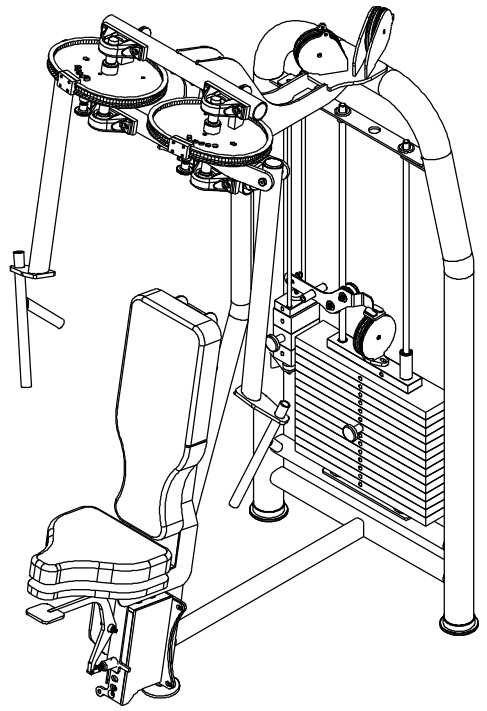
JOB NO.
XXXXXXXX

REV:
1

FILE LOCATION: C:\Cad Drawings\Solid Works\

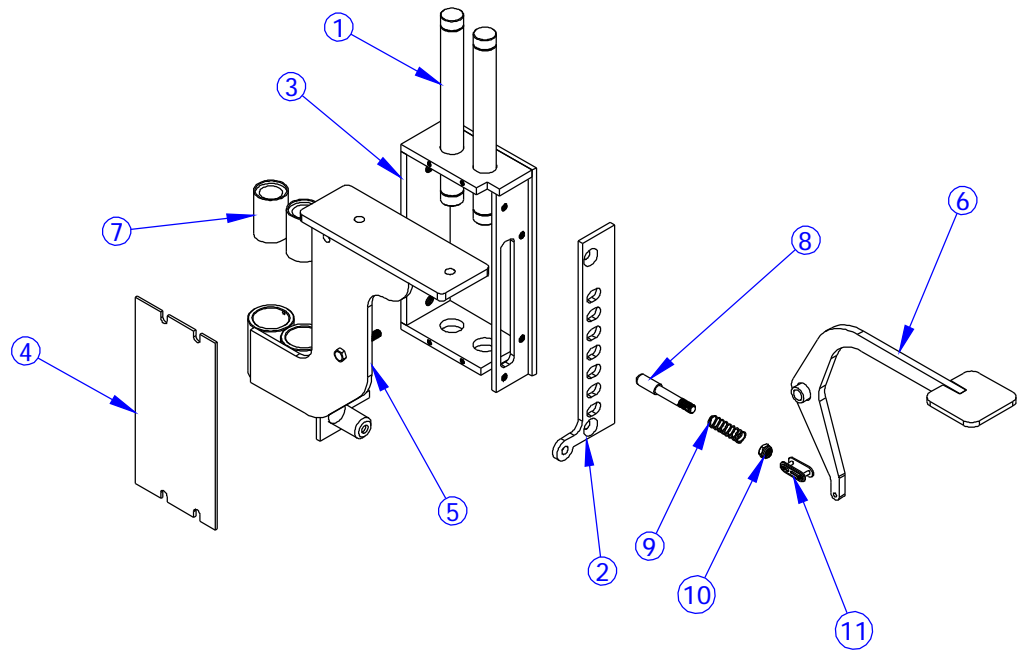
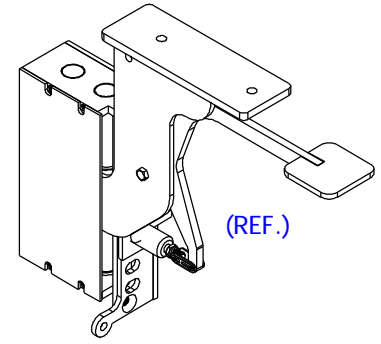
1 OF 1

ITEM NO.	QTY.	PART NO.	DESCRIPTION
1	1	100-483	SEAT BACK
2	1	100-957	MAIN FRAME
3	1	101-116	SEAT BOX
4	1	833-129	4" FOOT (LONG)
5	2	850-056	3" FOOT
6	1	851-012	1" LINEAR SHAFT - 12"
7	1	851-203	1" LINEAR SHAFT BEARING
8	3	853-303	4" CABLE PULLEY - 3/8" NARROW HOLE
9	1	900-081	SEAT PAD
10	1	900-185	BACK PAD
11	1	501-012	1/4" PLASMA
12	1	101-381	LINEAR BEARING BRACKET
13	1	101-382	ARM ASSEMBLY (RIGHT)
14	1	101-383	ARM ASSEMBLY (LEFT)
15	1	101-342	MINI WEIGHT STACK ASSEMBLY
16	1	101-386	WEIGHT STACK ASSEMBLY
17	1	101-148	LEFT BANANA ASSEMBLY



<p>This document contains information proprietary to Magnum Fitness Systems. It is submitted in confidence and is to be used solely for the purpose for which it is furnished. This document and such information is not to be reproduced, transmitted, or used in whole or part without written authorization.</p>	<p>TOLERANCES: + 0.000" - 1/16"</p>	<p>MAGNUM FITNESS SYSTEMS 2201 12th. Avenue S. Milwaukee, WI, 53172</p>		
	<p>UNLESS OTHERWISE SPECIFIED DIMENSIONS ARE IN INCHES.</p>	<p>TITLE: 2036 - PEC / REAR DELT</p>		
<p>DRAWN BY: R. Degenhardt</p>	<p>DATE: 01/28/05</p>	<p>PART NO. xxx-xxx</p>	<p>JOB NO. XXXXXXXX</p>	<p>REV: 1</p>
<p>FILE LOCATION: C:\Cad Drawings\Solid Works\</p>				<p>1 OF 1</p>

ITEM NO.	QTY.	PART NO.	DESCRIPTION
1	2	851-009	1" LINEAR SHAFT - 9 3/4"
2	1	339-963	1/4" PLASMA
3	1	100-352	SEAT BOX
4	1	500-462	10 GA. PLASMA
5	1	100-485	SEAT BOX BRACKET
6	1	101-117	HANDLE
7	2	851-203	1" LINEAR SHAFT BEARING
8	1	855-302	SPRING PIN w/ 5/32"
9	1	852-807	SPRING
10	1	817-306	3/8"-16 JAM NUT
11	1	700-534	MASTER LINK



<p>This document contains information proprietary to Magnum Fitness Systems. It is submitted in confidence and is to be used solely for the purpose for which it is furnished. This document and such information is not to be reproduced, transmitted, or used in whole or part without written authorization.</p>	<p>TOLERANCES: + 0.000" - 1/16"</p>		<p>MAGNUM FITNESS SYSTEMS 2201 12th. Avenue S. Milwaukee, WI, 53172</p>	
	<p>UNLESS OTHERWISE SPECIFIED DIMENSIONS ARE IN INCHES.</p>		<p>TITLE: SEAT BOX</p>	
<p>DRAWN BY: Joshua Wenzel</p>	<p>DATE: 05/25/04</p>	<p>PART NO. 101-116</p>	<p>JOB NO. XXXXXXXX</p>	<p>REV: 1</p>
<p>FILE LOCATION: C:\Cad Drawings\Solid Works\</p>				<p>1 OF 1</p>