

This document contains information proprietary to Magnum Fitness Systems. It is submitted in confidence and is to be used solely for the purpose for which it is furnished. This document and such information is not to be reproduced, transmitted, or used in whole or part without written authorization.

TOLERANCES: + 0.000"
- 1/16"

UNLESS OTHERWISE SPECIFIED
DIMENSIONS ARE IN INCHES.

DRAWN BY:
J. Wenzel

MAGNUM FITNESS SYSTEMS
2201 12th. Avenue
S. Milwaukee, WI, 53172

TITLE: 2010 v 1.0
Multi-Hip

DATE:
07/02/04

PART NO.
XXX-XXX

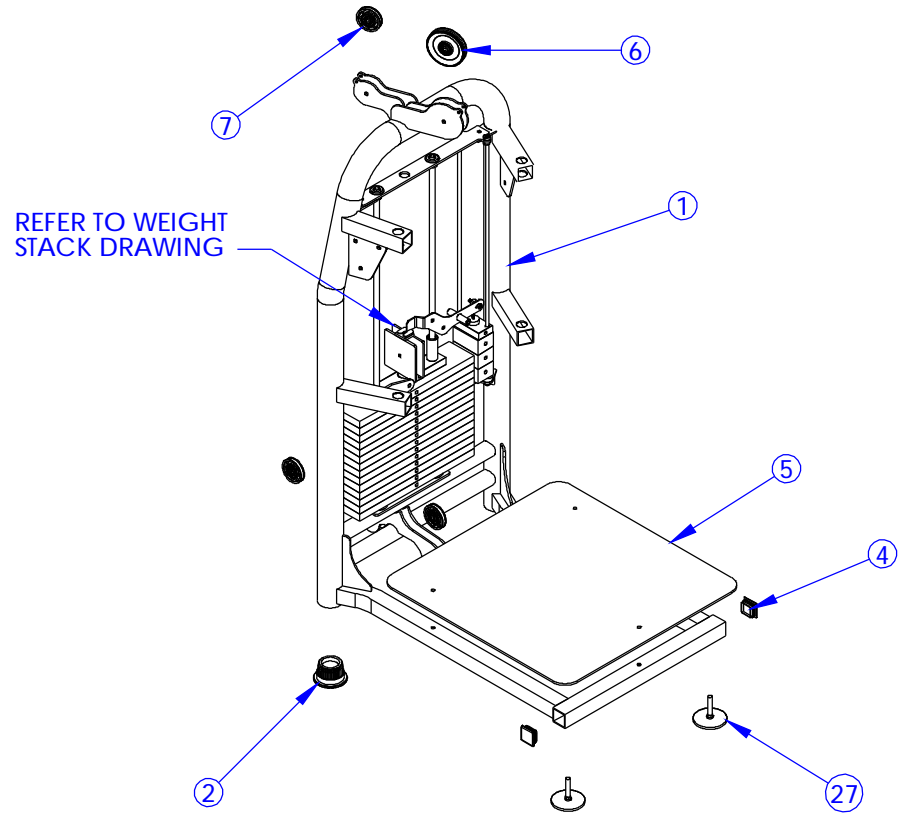
JOB NO.
XXXXXXXX

REV:
1

FILE LOCATION: C:\Cad Drawings\Solid Works\

1 OF 1

ITEM NO.	QTY.	PART NO.	DESCRIPTION
1	1	101-028	MAIN FRAME
2	2	850-056	3" FOOT
4	2	850-004	2" X 2" END CAP
5	1	501-222	3/16" DIAMOND PLATE
6	1	853-303	4" CABLE PULLEY - 3/8" NARROW HOLE
7	3	853-304	3" CABLE PULLEY - 3/8" NARROW HOLE
27	2	833-129	4" FOOT (LONG)
28	2	200-389	5/8" GUIDE ROD - 46 1/2"



This document contains information proprietary to Magnum Fitness Systems. It is submitted in confidence and is to be used solely for the purpose for which it is furnished. This document and such information is not to be reproduced, transmitted, or used in whole or part without written authorization.

TOLERANCES: + 0.000"
- 1/16"

UNLESS OTHERWISE SPECIFIED DIMENSIONS ARE IN INCHES.

MAGNUM FITNESS SYSTEMS
2201 12th. Avenue
S. Milwaukee, WI, 53172

TITLE: 2010 v 1.0 MAIN FRAME

DRAWN BY:
Joshua Wenzel

DATE:
05/11/04

PART NO.
XXX-XXX

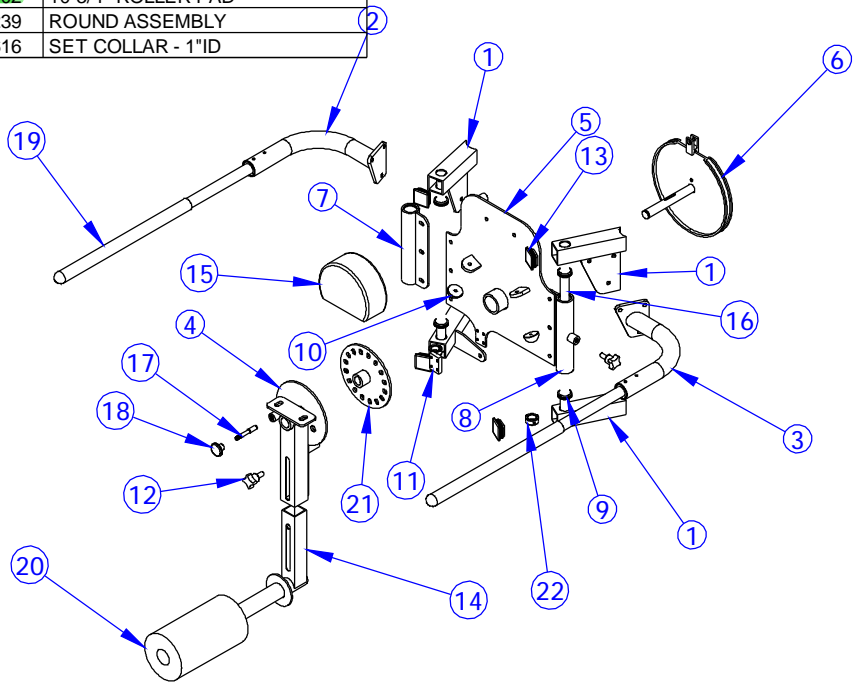
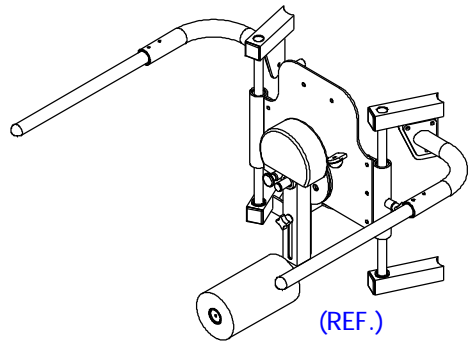
JOB NO.
XXXXXXXX

REV:
1

FILE LOCATION: C:\Cad Drawings\Solid Works\

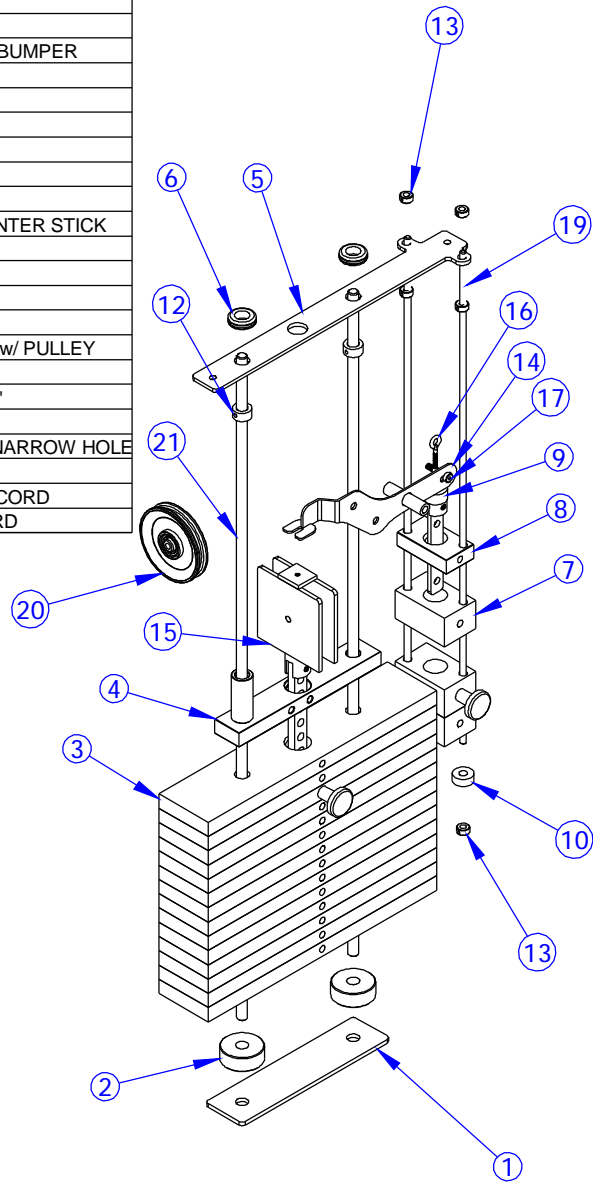
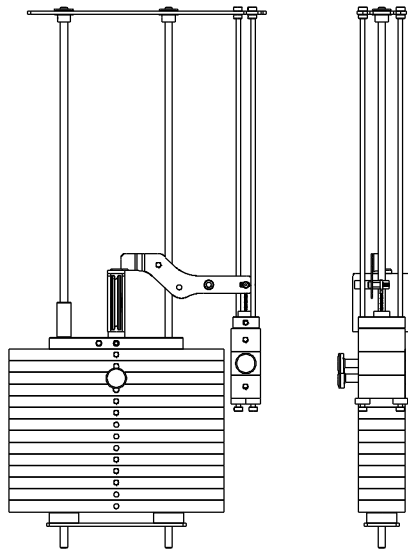
1 OF 3

ITEM NO.	QTY.	PART NO.	DESCRIPTION
1	1	101-028	MAIN FRAME
2	1	101-042	RIGHT ARM
3	1	101-043	LEFT ARM
4	1	100-950	HAMMER
5	1	101-036	MAIN PLATE
6	1	100-238	CAM
7	1	100-290	RAIL ASSEMBLY
8	1	100-291	RAIL ASSEMBLY
9	4	858-005	5/8" RUBBER GROMMET
10	2	838-223	HALF-ROUND RUBBER BUMPER
11	1	339-714	1/2" x 1 1/2" F.S. - 2 1/4"
12	2	852-501	STAR HANDLE
13	4	850-004	2" X 2" END CAP
14	1	339-971	ROLLER BRACKET
15	1	200-203	8" CRR - 3 1/4"
16	2	851-024	14 1/2" LINEAR SHAFT
17	1	855-302	SPRING PIN w/ 5/32"
18	1	852-207	GOLD PULL KNOB
19	2	700-014	20 1/2" GRIP
20	1	902-002	10 3/4" ROLLER PAD
21	1	100-239	ROUND ASSEMBLY
22	2	852-616	SET COLLAR - 1"ID



<p>This document contains information proprietary to Magnum Fitness Systems. It is submitted in confidence and is to be used solely for the purpose for which it is furnished. This document and such information is not to be reproduced, transmitted, or used in whole or part without written authorization.</p>	<p>TOLERANCES: + 0.000" - 1/16"</p>	<p>MAGNUM FITNESS SYSTEMS 2201 12th. Avenue S. Milwaukee, WI, 53172</p>			
	<p>UNLESS OTHERWISE SPECIFIED DIMENSIONS ARE IN INCHES.</p>	<p>TITLE: 2010 v 1.0 USER SIDE</p>			
<p>DRAWN BY: Joshua Wenzel</p>	<p>DATE: 05/11/04</p>	<p>PART NO. XXX-XXX</p>	<p>JOB NO. XXXXXXXX</p>	<p>REV: 1</p>	
<p>FILE LOCATION: C:\Cad Drawings\Solid Works\</p>					<p>2 OF 3</p>

ITEM NO.	QTY.	PART NO.	DESCRIPTION
1	1	101-028	MAIN FRAME
2	2	838-211	ROUND WEIGHT STACK BUMPER
3	14	300-410	1" x 4" F.S. - 18 1/2"
4	1	100-539	TOP WEIGHT PLATE
5	1	500-963	1/4" PLASMA
6	2	858-005	5/8" RUBBER GROMMET
7	3	300-413	2" x 4" F.S. - 2 9/16"
8	1	807-001	1" x 2 1/4" F.S. - 4"
9	1	101-053	MINI WEIGHT STACK CENTER STICK
10	2	858-251	1/2" RUBBER BUMPER
12	2	852-610	5/8" SET COLLAR
13	6	852-607	3/8" SHAFT COLLAR
14	1	101-084	RIGHT BANANA
15	1	101-085	15 HOLE CENTER STICK w/ PULLEY
16	1	818-899	3/8" EYE BOLT - 2 1/2"
17	1	810-953	3/8" SHOULDER BOLT - 1"
19	2	200-390	5/8" GUIDE ROD - 34 1/2"
20	1	853-303	4" CABLE PULLEY - 3/8" NARROW HOLE
21	2	200-389	5/8" GUIDE ROD - 46 1/2"
22	1	852-007	SELECTOR PIN w/ 6 1/2" CORD
23	1	852-008	SELECTOR PIN w/ 4" CORD



This document contains information proprietary to Magnum Fitness Systems. It is submitted in confidence and is to be used solely for the purpose for which it is furnished. This document and such information is not to be reproduced, transmitted, or used in whole or part without written authorization.

TOLERANCES: + 0.000"
- 1/16"

UNLESS OTHERWISE SPECIFIED
DIMENSIONS ARE IN INCHES.

MAGNUM FITNESS SYSTEMS
2201 12th. Avenue
S. Milwaukee, WI, 53172

TITLE: 2010 v 1.0 WEIGHT STACK

DRAWN BY:
Joshua Wenzel

DATE:
05/11/04

PART NO.
XXX-XXX

JOB NO.
XXXXXXXXX

REV:
1