

This document contains information proprietary to Magnum Fitness Systems. It is submitted in confidence and is to be used solely for the purpose for which it is furnished. This document and such information is not to be reproduced, transmitted, or used in whole or part without written authorization.

TOLERANCES: + 0.000"
- 1/16"

UNLESS OTHERWISE SPECIFIED
DIMENSIONS ARE IN INCHES.

DRAWN BY:
R. Degenhardt

MAGNUM FITNESS SYSTEMS

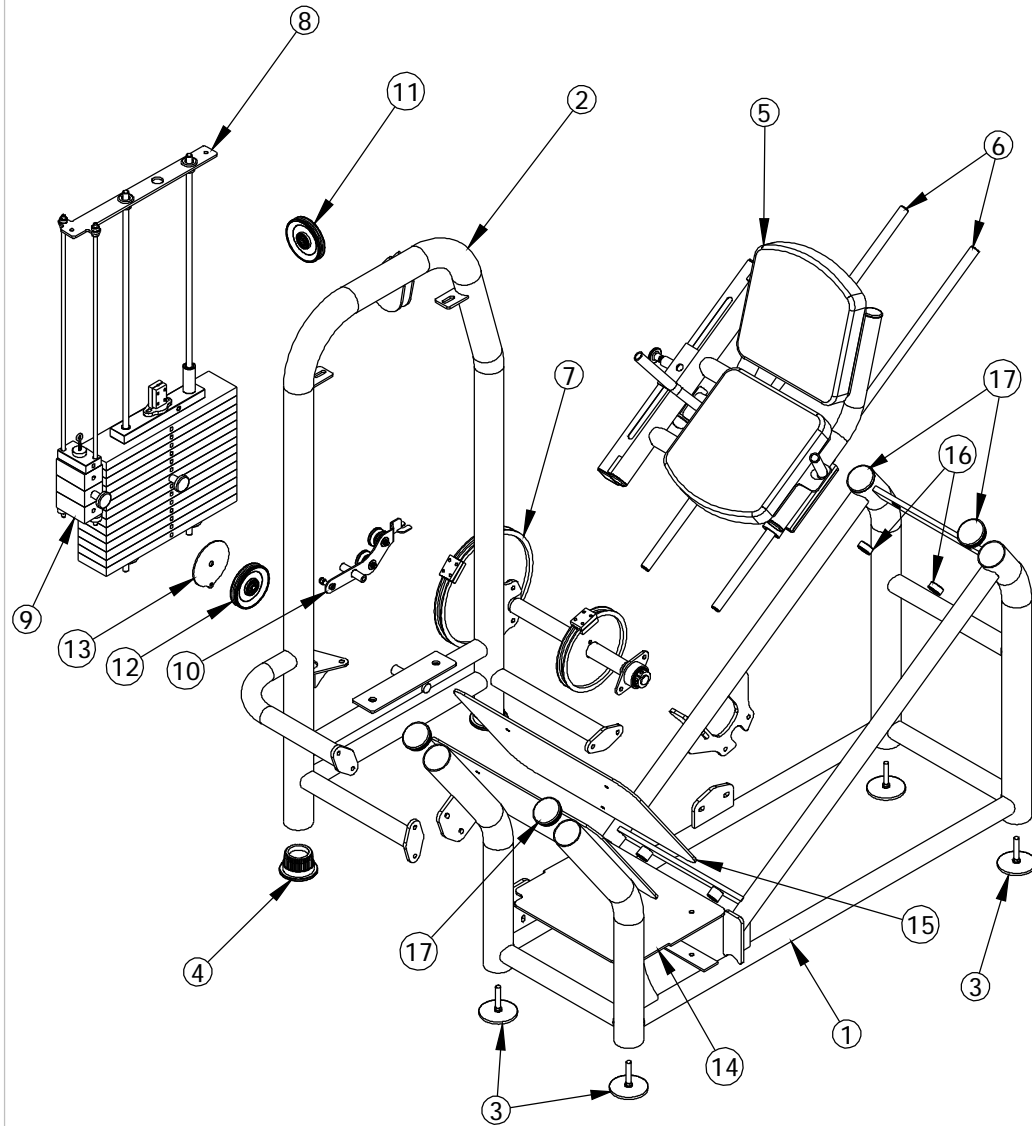
2201 12th. Avenue
S. Milwaukee, WI, 53172

TITLE: 2006 - Leg Press/Angled Calf

DATE: 01/19/05	PART NO. xxx-xxx	JOB NO. XXXXXXXX	REV: 1
-------------------	---------------------	---------------------	-----------

FILE LOCATION: C:\Cad Drawings\Solid Works\

1 OF 1



This document contains information proprietary to Magnum Fitness Systems. It is submitted in confidence and is to be used solely for the purpose for which it is furnished. This document and such information is not to be reproduced, transmitted, or used in whole or part without written authorization.

TOLERANCES: + 0.000"
- 1/16"

MAGNUM FITNESS SYSTEMS
2201 12th. Avenue
S. Milwaukee, WI, 53172

UNLESS OTHERWISE SPECIFIED
DIMENSIONS ARE IN INCHES.

TITLE: 2006 - Leg Press/Angled Calf

DRAWN BY:
R. Degenhardt

DATE:
01/19/05

PART NO.
xxx-xxx

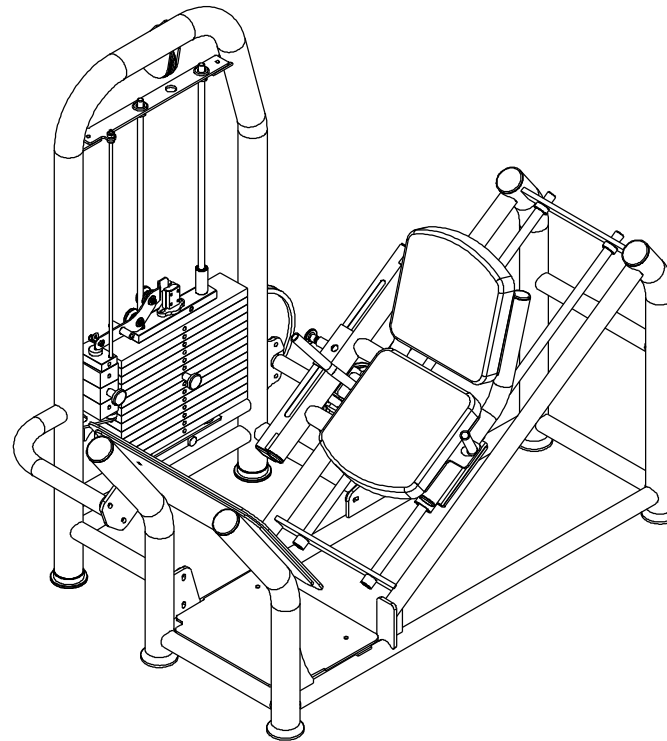
JOB NO.
XXXXXXXX

REV:
1

FILE LOCATION: C:\Cad Drawings\Solid Works\

1 OF 1

ITEM NO.	QTY.	PART NO.	DESCRIPTION
1	1	101-133	2006 MAIN FRAME SUB-ASSEMBLY
2	1	101-134	2006 MAIN FRAME SUB-ASSEMBLY
3	4	833-129	4" FOOT (LONG)
4	2	850-056	3" FOOT
5	1	101-367	2006 SEAT ASSEMBLY
6	2	851-164	INA 1" LINEAR SHAFT - 45"
7	1	101-370	2006 CAM ASSEMBLY
8	1	101-332	WEIGHT STACK ASSEMBLY
9	1	101-288	MINI WEIGHT STACK ASSEMBLY
10	1	101-148	LEFT BANANA ASSEMBLY
11	1	853-303	4" CABLE PULLEY - 3/8" NARROW HOLE
12	1	853-300	4" CABLE PULLEY - 1/2" NARROW HOLE
13	1	501-125	1/8" PLASMA
14	1	501-352	DIAMOND PLATE
15	1	501-353	DIAMOND PLATE
16	2	852-616	SET COLLAR - 1"ID
17	4	850-045	3" ROUND END CAP



This document contains information proprietary to Magnum Fitness Systems. It is submitted in confidence and is to be used solely for the purpose for which it is furnished. This document and such information is not to be reproduced, transmitted, or used in whole or part without written authorization.

TOLERANCES: + 0.000"
- 1/16"

UNLESS OTHERWISE SPECIFIED
DIMENSIONS ARE IN INCHES.

DRAWN BY:
R. Degenhardt

MAGNUM FITNESS SYSTEMS

2201 12th. Avenue
S. Milwaukee, WI, 53172

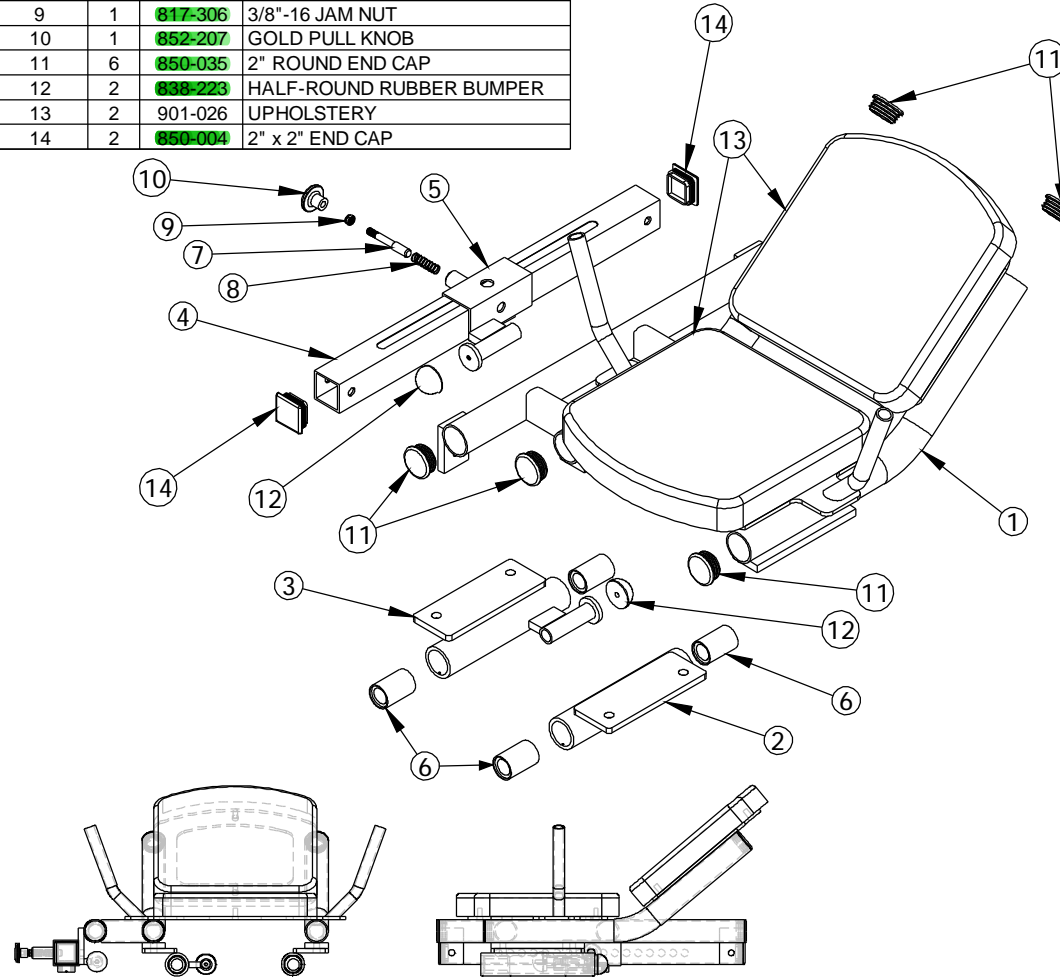
TITLE: 2006 - Leg Press/Angled Calf

DATE: 01/19/05	PART NO. xxx-xxx	JOB NO. XXXXXXXX	REV: 1
-------------------	---------------------	---------------------	-----------

FILE LOCATION: C:\Cad Drawings\Solid Works\

1 OF 1

ITEM NO.	QTY.	PART NO.	DESCRIPTION
1	1	101-135	2006 SUB-ASSEMBLY
2	1	101-138	2006 SUB-ASSEMBLY
3	1	101-137	2006 SUB-ASSEMBLY
4	1	339-045	2" x 2" TUBE - 26" CHROMED
5	1	101-136	2006 SUB-ASSEMBLY
6	4	851-203	1" LINEAR SHAFT BEARING
7	1	855-302	SPRING PIN w/ 5/32"
8	1	852-807	SPRING
9	1	817-306	3/8"-16 JAM NUT
10	1	852-207	GOLD PULL KNOB
11	6	850-035	2" ROUND END CAP
12	2	838-223	HALF-ROUND RUBBER BUMPER
13	2	901-026	UPHOLSTERY
14	2	850-004	2" x 2" END CAP



This document contains information proprietary to Magnum Fitness Systems. It is submitted in confidence and is to be used solely for the purpose for which it is furnished. This document and such information is not to be reproduced, transmitted, or used in whole or part without written authorization.

TOLERANCES: + 0.000"
- 1/16"

MAGNUM FITNESS SYSTEMS

2201 12th. Avenue
S. Milwaukee, WI, 53172

TITLE: 2006 SEAT ASSEMBLY

UNLESS OTHERWISE SPECIFIED
DIMENSIONS ARE IN INCHES.

DRAWN BY:
R. Degenhardt

DATE:
01/18/05

PART NO.
101-367

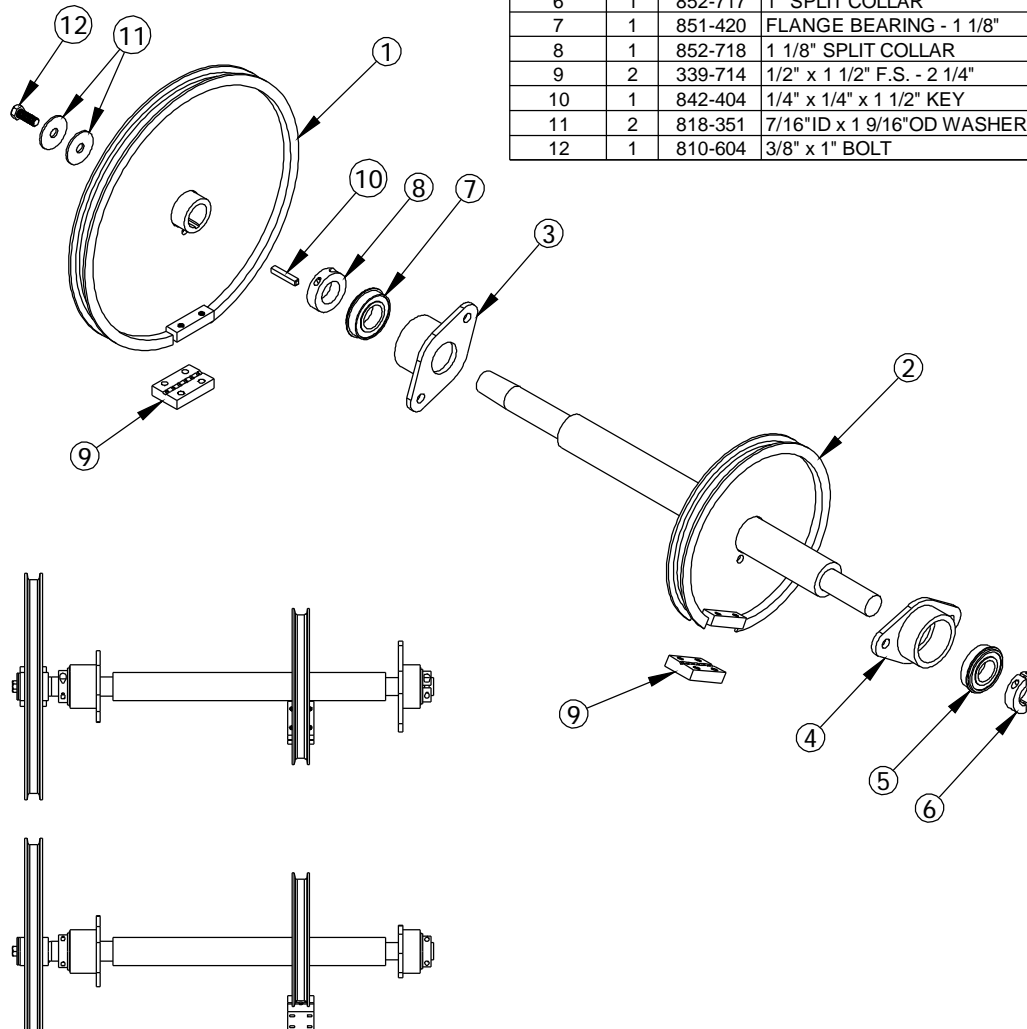
JOB NO.
XXXXXXXX

REV:
1

FILE LOCATION: C:\Cad Drawings\Solid Works\

1 OF 1

ITEM NO.	QTY.	PART NO.	DESCRIPTION
1	1	100-881	12" ROUND CAM
2	1	101-151	2006 CAM SHAFT ASSEMBLY
3	1	100-879	BEARING HOUSING
4	1	100-880	BEARING HOUSING
5	1	851-416	FLANGE BEARING - 1"
6	1	852-717	1" SPLIT COLLAR
7	1	851-420	FLANGE BEARING - 1 1/8"
8	1	852-718	1 1/8" SPLIT COLLAR
9	2	339-714	1/2" x 1 1/2" F.S. - 2 1/4"
10	1	842-404	1/4" x 1/4" x 1 1/2" KEY
11	2	818-351	7/16"ID x 1 9/16"OD WASHER
12	1	810-604	3/8" x 1" BOLT



This document contains information proprietary to Magnum Fitness Systems. It is submitted in confidence and is to be used solely for the purpose for which it is furnished. This document and such information is not to be reproduced, transmitted, or used in whole or part without written authorization.

TOLERANCES: + 0.000"
- 1/16"

UNLESS OTHERWISE SPECIFIED
DIMENSIONS ARE IN INCHES.

DRAWN BY:
R. Degenhardt

MAGNUM FITNESS SYSTEMS

2201 12th. Avenue
S. Milwaukee, WI, 53172

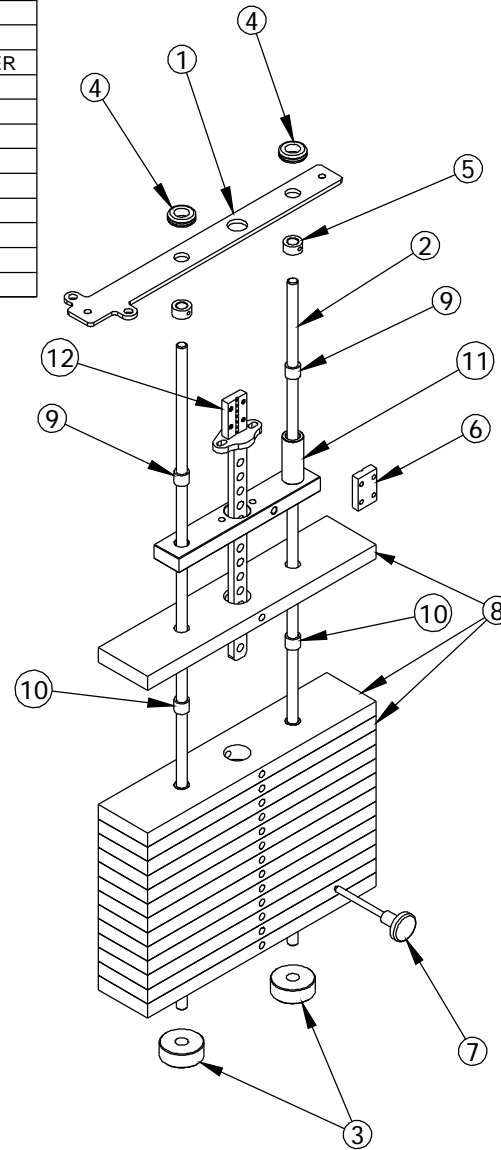
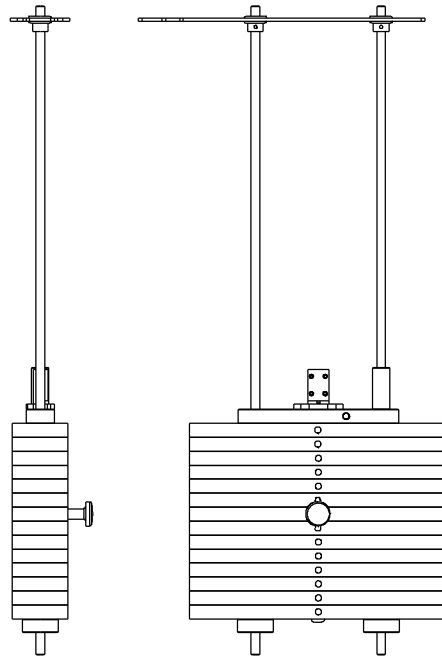
TITLE: 2006 CAM ASSEMBLY

DATE: 01/19/05	PART NO. 101-370	JOB NO. XXXXXXXX	REV: 1
-------------------	---------------------	---------------------	-----------

FILE LOCATION: C:\Cad Drawings\Solid Works\

1 OF 1

ITEM NO.	QTY.	PART NO.	DESCRIPTION
1	1	500-963	1/4" PLASMA
2	2	200-389	5/8" GUIDE ROD - 46 1/2"
3	2	838-211	ROUND WEIGHT STACK BUMPER
4	2	858-005	5/8" RUBBER GROMMET
5	2	852-610	5/8" SET COLLAR
6	1	339-714	1/2" x 1 1/2" F.S. - 2 1/4"
7	1	852-007	SELECTOR PIN w/ 6 1/2" CORD
8	14	300-410	1" x 4" F.S. - 18 1/2"
9	2	849-001	7/8"OD x 5/8"ID x 3/4" BUSHING
10	28	849-002	7/8"OD x .640"ID x 3/4" BUSHING
11	1	101-129	TOP WEIGHT PLATE
12	1	101-127	CENTER STICK - 14



This document contains information proprietary to Magnum Fitness Systems. It is submitted in confidence and is to be used solely for the purpose for which it is furnished. This document and such information is not to be reproduced, transmitted, or used in whole or part without written authorization.

TOLERANCES: + 0.000"
- 1/16"

UNLESS OTHERWISE SPECIFIED
DIMENSIONS ARE IN INCHES.

DRAWN BY:
RAD

MAGNUM FITNESS SYSTEMS

2201 12th. Avenue
S. Milwaukee, WI, 53172

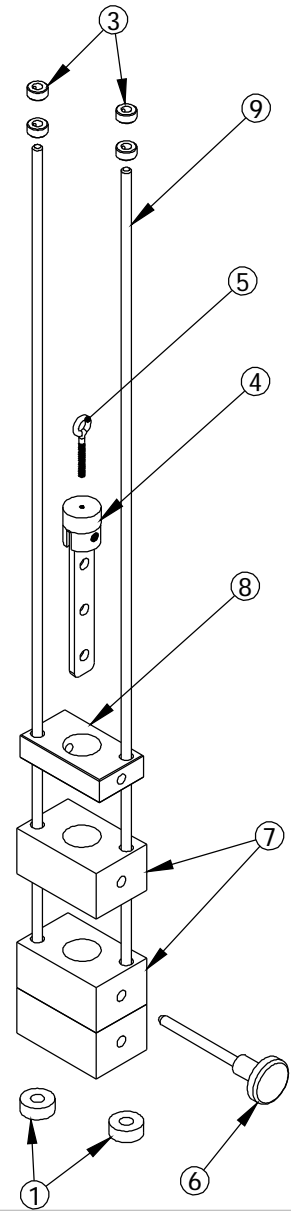
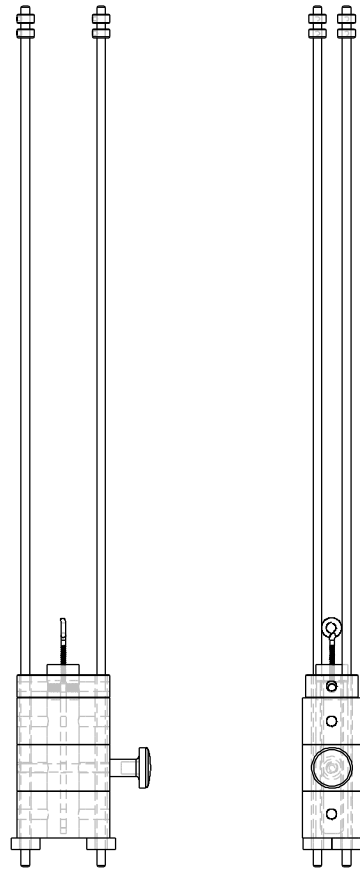
TITLE: WEIGHT STACK ASSEMBLY
62" FRAME - 14 PLATE

DATE: 12/17/04	PART NO. 101-332	JOB NO. XXXXXXXX	REV: 1
-------------------	---------------------	---------------------	-----------

FILE LOCATION: C:\Cad Drawings\Solid Works\

1 OF 1

ITEM NO.	QTY.	PART NO.	DESCRIPTION
1	2	858-251	1/2" RUBBER BUMPER
3	4	852-607	3/8" SHAFT COLLAR
4	1	101-053	MINI WEIGHT STACK CENTER STICK
5	1	818-899	3/8" EYE BOLT - 2 1/2"
6	1	852-008	SELECTOR PIN w/ 4" CORD
7	3	300-413	2" x 4" F.S. - 2 9/16"
8	1	807-001	1" x 2 1/4" F.S. - 4"
9	2	200-394	3/8" GUIDE ROD - 37"



This document contains information proprietary to Magnum Fitness Systems. It is submitted in confidence and is to be used solely for the purpose for which it is furnished. This document and such information is not to be reproduced, transmitted, or used in whole or part without written authorization.

TOLERANCES: + 0.000"
- 1/16"

UNLESS OTHERWISE SPECIFIED
DIMENSIONS ARE IN INCHES.

DRAWN BY:
RAD

MAGNUM FITNESS SYSTEMS
2201 12th. Avenue
S. Milwaukee, WI, 53172

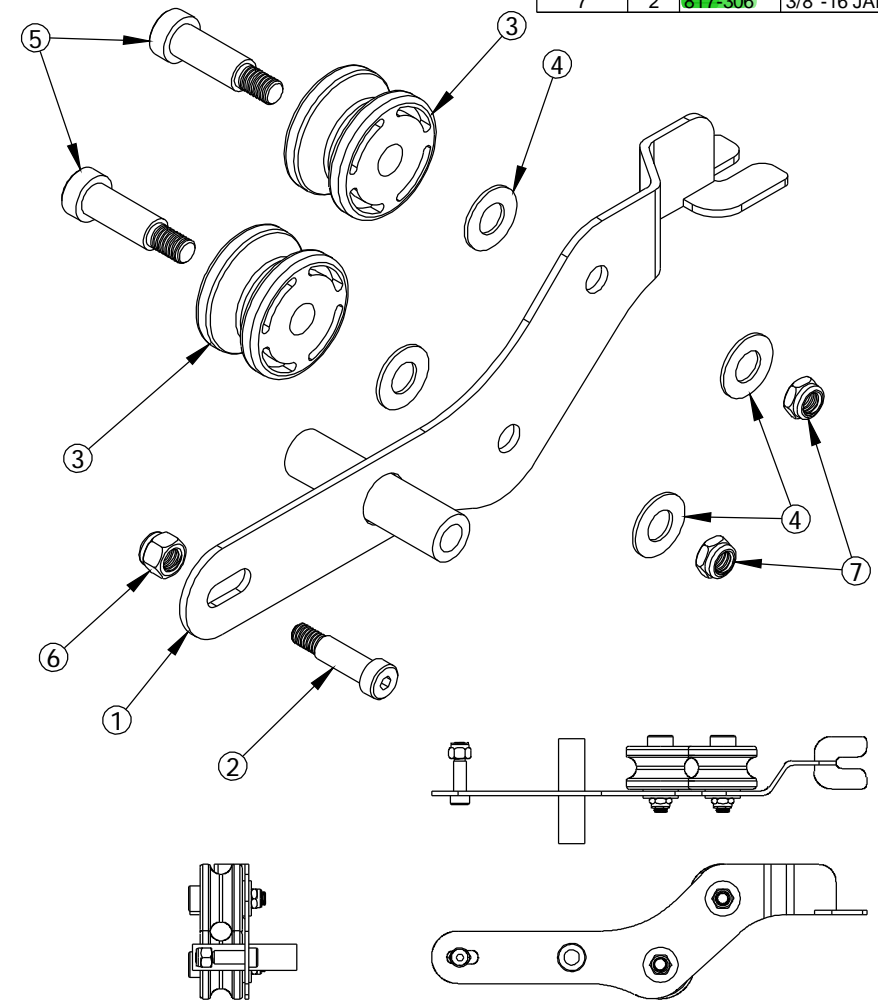
TITLE: MINI WEIGHT STACK ASSEMBLY

DATE: 11/17/04	PART NO. 101-288	JOB NO. XXXXXXXX	REV: 1
-------------------	---------------------	---------------------	-----------

FILE LOCATION: C:\Cad Drawings\Solid Works\

1 OF 1

ITEM NO.	QTY.	PART NO.	DESCRIPTION
1	1	101-083	LEFT BANANA
2	1	810-953	3/8" SHOULDER BOLT - 1"
3	2	853-314	ROLLER w/ BEARING
4	4	818-008	1/2" FLAT WASHER
5	2	810-954	1/2" x 1 1/4" SHOULDER BOLT
6	1	817-406	3/8" NUT
7	2	817-306	3/8"-16 JAM NUT



This document contains information proprietary to Magnum Fitness Systems. It is submitted in confidence and is to be used solely for the purpose for which it is furnished. This document and such information is not to be reproduced, transmitted, or used in whole or part without written authorization.

TOLERANCES: + 0.000"
- 1/16"

UNLESS OTHERWISE SPECIFIED
DIMENSIONS ARE IN INCHES.

DRAWN BY:
RAD

MAGNUM FITNESS SYSTEMS
2201 12th. Avenue
S. Milwaukee, WI, 53172

TITLE: BANANA ASSEMBLY (LEFT)

DATE: 08/02/04	PART NO. 101-148	JOB NO. XXXXXXXX	REV: 1
-------------------	---------------------	---------------------	-----------

FILE LOCATION: C:\Cad Drawings\Solid Works\