

This document contains information proprietary to Magnum Fitness Systems. It is submitted in confidence and is to be used solely for the purpose for which it is furnished. This document and such information is not to be reproduced, transmitted, or used in whole or part without written authorization.

TOLERANCES: + 0.000"
- 1/16"

UNLESS OTHERWISE SPECIFIED
DIMENSIONS ARE IN INCHES.

DRAWN BY:
J. WENZEL

MAGNUM FITNESS SYSTEMS
2201 12th. Avenue
S. Milwaukee, WI, 53172

TITLE: 2002 v 1.0
Leg Curl Prone

DATE:
09/09/04

PART NO.
XXX-XXX

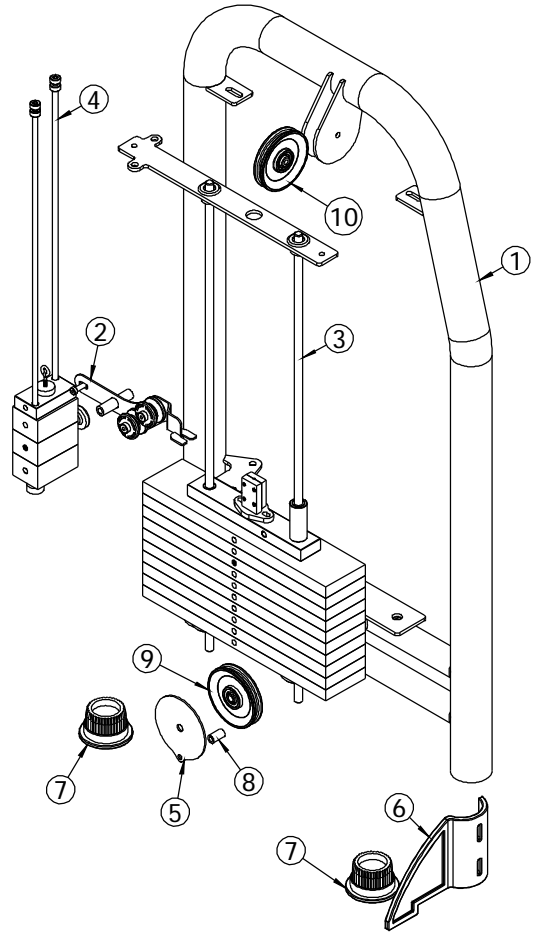
JOB NO.
XXXXXXXX

REV:
1

FILE LOCATION: C:\Cad Drawings\Solid Works\

1 OF 1

ITEM NO.	QTY.	PART NO.	DESCRIPTION
1	1	100-945	MAIN FRAME
2	1	401-149	RIGHT BANANA
3	1	101-153	WEIGHT STACK ASSEMBLY
4	1	101-154	MINI-WEIGHT STACK
5	1	501-125	1/8" PLASMA
6	1	836-221	LEFT STABILIZING BRACE
7	2	850-056	3" FOOT
8	1	850-402	1 1/8" BLACK SPACER
9	1	853-300	4" CABLE PULLEY - 1/2" NARROW HOLE
10	1	853-303	4" CABLE PULLEY - 3/8" NARROW HOLE



This document contains information proprietary to Magnum Fitness Systems. It is submitted in confidence and is to be used solely for the purpose for which it is furnished. This document and such information is not to be reproduced, transmitted, or used in whole or part without written authorization.

TOLERANCES: + 0.000"
- 1/16"

UNLESS OTHERWISE SPECIFIED
DIMENSIONS ARE IN INCHES.

DRAWN BY:
J. WENZEL

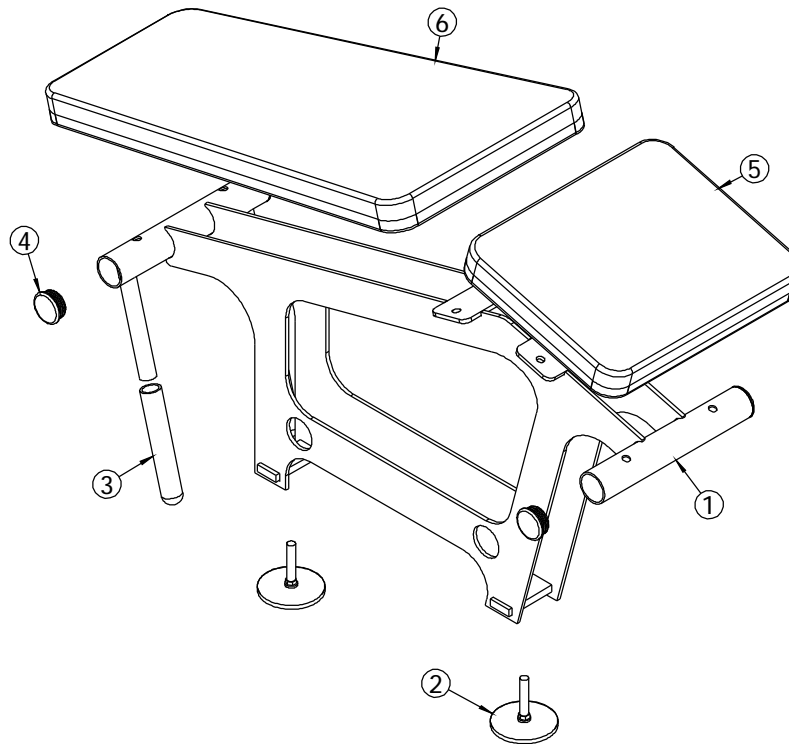
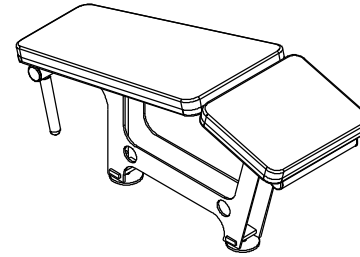
MAGNUM FITNESS SYSTEMS
2201 12th. Avenue
S. Milwaukee, WI, 53172

TITLE: 2002 v 1.0
Weight Stack

DATE: 09/09/04	PART NO. XXX-XXX	JOB NO. XXXXXXXX	REV: 1
-------------------	---------------------	---------------------	-----------

FILE LOCATION: C:\Cad Drawings\Solid Works\ 1 OF 1

ITEM NO.	QTY.	PART NO.	DESCRIPTION
1	1	100-945	MAIN FRAME
2	2	833-129	4" FOOT (LONG)
3	2	700-012	6 3/4" GRIP
4	4	850-035	2" ROUND END CAP
5	1	901-003	SEAT PAD
6	1	901-002	CHEST PAD



This document contains information proprietary to Magnum Fitness Systems. It is submitted in confidence and is to be used solely for the purpose for which it is furnished. This document and such information is not to be reproduced, transmitted, or used in whole or part without written authorization.

TOLERANCES: + 0.000"
- 1/16"

UNLESS OTHERWISE SPECIFIED
DIMENSIONS ARE IN INCHES.

DRAWN BY
J. WENZEL

MAGNUM FITNESS SYSTEMS
2201 12th. Avenue
S. Milwaukee, WI, 53172

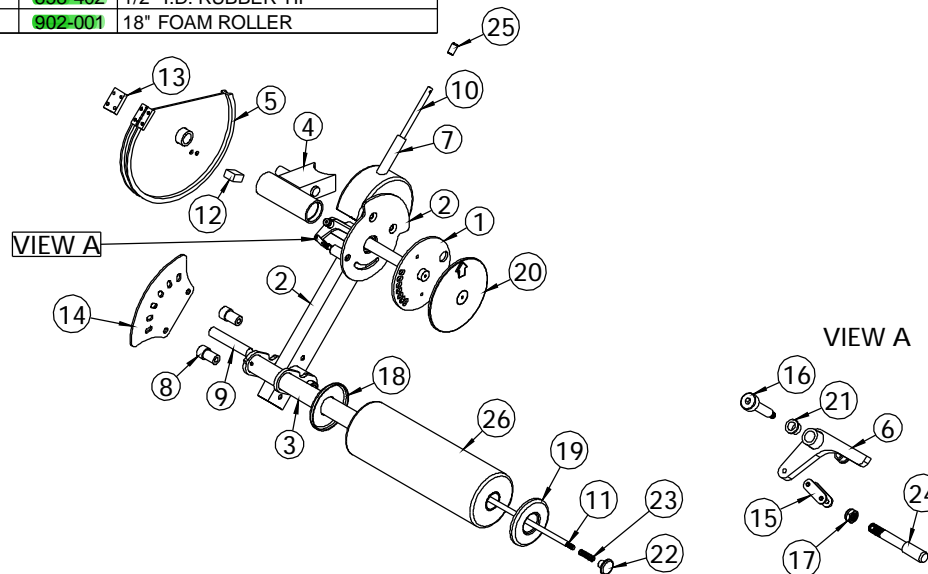
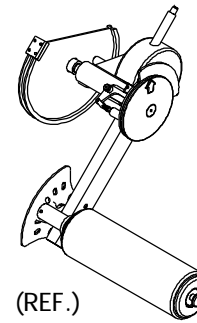
TITLE: 2002 v 1.0
User Side

DATE: 09/09/04	PART NO. XXX-XXX	JOB NO. XXXXXXXX	REV: 1
-------------------	---------------------	---------------------	-----------

FILE LOCATION: C:\Cad Drawings\Solid Works\

1 OF 1

ITEM NO.	QTY.	PART NO.	DESCRIPTION
1	1	100-893	ADJUSTER PLATE
2	1	100-915	HAMMER
3	1	100-943	ROLLER
4	1	100-945	MAIN FRAME
5	1	101-031	CAM
6	1	101-081	LINKAGE LEVER
7	1	101-080	COUNTER WEIGHT
8	2	101-082	STOP
9	1	200-329	1" CRR - 5 1/4"
10	1	339-012	ADJUSTMENT ROD
11	1	339-013	SPRING PIN
12	1	339-021	CHROMED STOP
13	1	339-714	1/2" x 1 1/2" F.S. - 2 1/4"
14	1	339-968	3/16" PLASMA - CHROME
15	1	700-534	MASTER LINK
16	1	810-971	3/8" x 1 1/2" SHOULDER BOLT
17	1	817-306	3/8"-16 JAM NUT
18	1	836-215	ROLLER END CAP w/ 2" HOLE
19	1	836-216	ROLLER END CAP w/ 5/16" HOLE
20	1	836-265	RANGE LIMITER COVER
21	2	851-552	3/8" FLANGE BUSHING - 3/8"
22	1	852-207	GOLD PULL KNOB
23	1	852-807	SPRING
24	1	855-302	SPRING PIN w/ 5/32"
25	1	858-402	1/2" I.D. RUBBER TIP
26	1	902-001	18" FOAM ROLLER



This document contains information proprietary to Magnum Fitness Systems. It is submitted in confidence and is to be used solely for the purpose for which it is furnished. This document and such information is not to be reproduced, transmitted, or used in whole or part without written authorization.

TOLERANCES: + 0.000"
- 1/16"

UNLESS OTHERWISE SPECIFIED
DIMENSIONS ARE IN INCHES.

DRAWN BY:
J. WENZEL

MAGNUM FITNESS SYSTEMS
2201 12th. Avenue
S. Milwaukee, WI, 53172

TITLE: 2002 v 1.0
Hammer

DATE:
09/09/04

PART NO.
XXX-XXX

JOB NO.
XXXXXXXXX

REV:
1

FILE LOCATION: C:\Cad Drawings\Solid Works\

1 OF 1