

This document contains information proprietary to Magnum Fitness Systems. It is submitted in confidence and is to be used solely for the purpose for which it is furnished. This document and such information is not to be reproduced, transmitted, or used in whole or part without written authorization.

TOLERANCES: + 0.000"
- 1/16"

UNLESS OTHERWISE SPECIFIED
DIMENSIONS ARE IN INCHES.

DRAWN BY:
J. Wenzel

MAGNUM FITNESS SYSTEMS
2201 12th. Avenue
S. Milwaukee, WI, 53172

TITLE: 2001 v 1.0
Leg Extension

DATE:
08/02/04

PART NO.
XXX-XXX

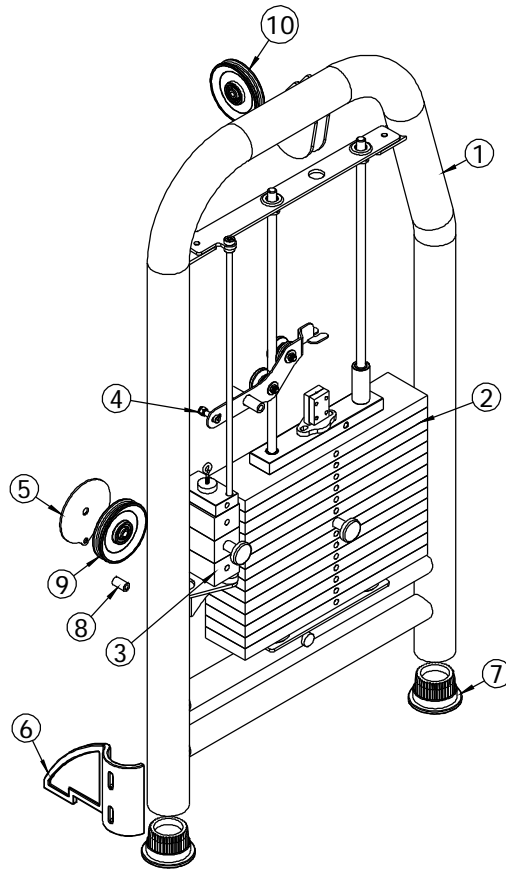
JOB NO.
XXXXXXXX

REV:
1

FILE LOCATION: C:\Cad Drawings\Solid Works\

1 OF 4

ITEM NO.	QTY.	PART NO.	DESCRIPTION
1	1	100-964	MAIN FRAME
2	1	101-141	WEIGHT STACK ASSEMBLY
3	1	101-146	MINI-WEIGHT STACK
4	1	101-148	LEFT BANANA ASSEMBLY
5	1	501-125	1/8" PLASMA
6	1	836-221	LEFT STABILIZING BRACE
7	2	850-056	3" FOOT
8	1	850-402	1 1/8" BLACK SPACER
9	1	853-300	4" CABLE PULLEY - 1/2" NARROW HOLE
10	1	853-303	4" CABLE PULLEY - 3/8" NARROW HOLE



This document contains information proprietary to Magnum Fitness Systems. It is submitted in confidence and is to be used solely for the purpose for which it is furnished. This document and such information is not to be reproduced, transmitted, or used in whole or part without written authorization.

TOLERANCES: + 0.000"
- 1/16"

UNLESS OTHERWISE SPECIFIED
DIMENSIONS ARE IN INCHES.

DRAWN BY:
J. Wenzel

MAGNUM FITNESS SYSTEMS
2201 12th. Avenue
S. Milwaukee, WI, 53172

TITLE: 2001 v 1.0
Weight Stack

DATE:
08/02/04

PART NO.
XXX-XXX

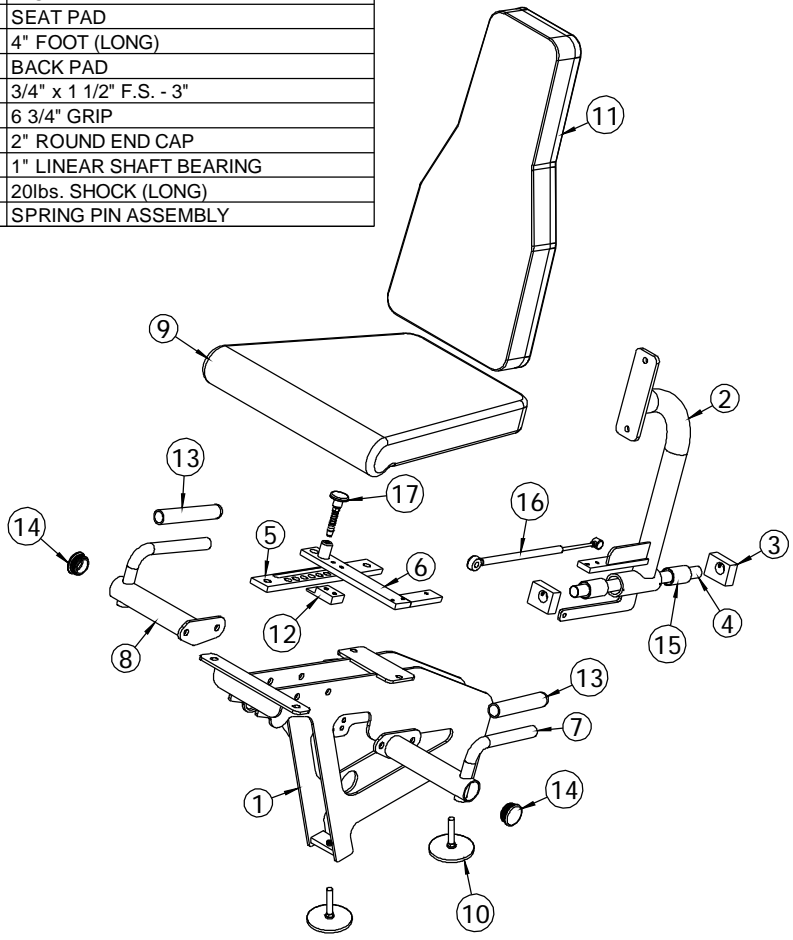
JOB NO.
XXXXXXXX

REV:
1

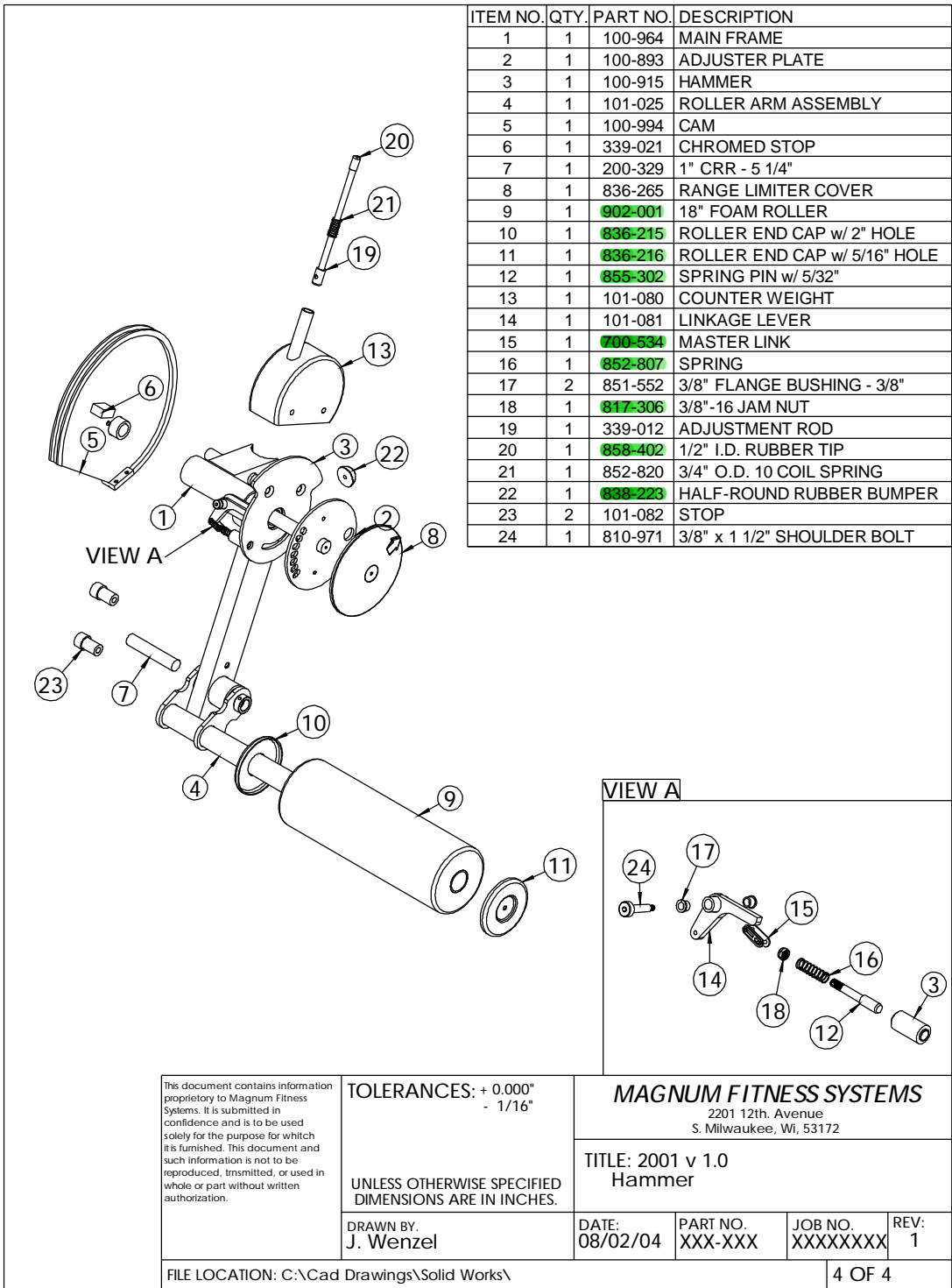
FILE LOCATION: C:\Cad Drawings\Solid Works\

2 OF 4

ITEM NO.	QTY.	PART NO.	DESCRIPTION
1	1	100-964	MAIN FRAME
2	1	100-906	SEAT SUPPORT
3	2	300-332	1" x 2" F.S. - 2 1/2"
4	1	851-161	1" x 16" LINEAR SHAFT
5	1	339-925	1/2" x 2" F.S. - 14 7/8"
6	1	100-194	SEAT BACK ADJUSTMENT BRACKET
7	1	101-007	LEFT HANDLE
8	1	101-008	RIGHT HANDLE
9	1	900-037	SEAT PAD
10	2	833-129	4" FOOT (LONG)
11	1	901-000	BACK PAD
12	1	300-297	3/4" x 1 1/2" F.S. - 3"
13	2	700-012	6 3/4" GRIP
14	2	850-035	2" ROUND END CAP
15	2	851-203	1" LINEAR SHAFT BEARING
16	1	852-827	20lbs. SHOCK (LONG)
17	1	101-140	SPRING PIN ASSEMBLY



<p>This document contains information proprietary to Magnum Fitness Systems. It is submitted in confidence and is to be used solely for the purpose for which it is furnished. This document and such information is not to be reproduced, transmitted, or used in whole or part without written authorization.</p>	<p>TOLERANCES: + 0.000" - 1/16"</p>	<p>MAGNUM FITNESS SYSTEMS 2201 12th. Avenue S. Milwaukee, WI, 53172</p>		
	<p>UNLESS OTHERWISE SPECIFIED DIMENSIONS ARE IN INCHES.</p>	<p>TITLE: 2001 v 1.0 User Side</p>		
<p>DRAWN BY: J. Wenzel</p>	<p>DATE: 08/02/04</p>	<p>PART NO. XXX-XXX</p>	<p>JOB NO. XXXXXXXX</p>	<p>REV: 1</p>
<p>FILE LOCATION: C:\Cad Drawings\Solid Works\</p>				<p>3 OF 4</p>



ITEM NO.	QTY.	PART NO.	DESCRIPTION
1	1	100-964	MAIN FRAME
2	1	100-893	ADJUSTER PLATE
3	1	100-915	HAMMER
4	1	101-025	ROLLER ARM ASSEMBLY
5	1	100-994	CAM
6	1	339-021	CHROMED STOP
7	1	200-329	1" CRR - 5 1/4"
8	1	836-265	RANGE LIMITER COVER
9	1	902-001	18" FOAM ROLLER
10	1	836-215	ROLLER END CAP w/ 2" HOLE
11	1	836-216	ROLLER END CAP w/ 5/16" HOLE
12	1	855-302	SPRING PIN w/ 5/32"
13	1	101-080	COUNTER WEIGHT
14	1	101-081	LINKAGE LEVER
15	1	700-534	MASTER LINK
16	1	852-807	SPRING
17	2	851-552	3/8" FLANGE BUSHING - 3/8"
18	1	817-306	3/8"-16 JAM NUT
19	1	339-012	ADJUSTMENT ROD
20	1	858-402	1/2" I.D. RUBBER TIP
21	1	852-820	3/4" O.D. 10 COIL SPRING
22	1	838-223	HALF-ROUND RUBBER BUMPER
23	2	101-082	STOP
24	1	810-971	3/8" x 1 1/2" SHOULDER BOLT

This document contains information proprietary to Magnum Fitness Systems. It is submitted in confidence and is to be used solely for the purpose for which it is furnished. This document and such information is not to be reproduced, transmitted, or used in whole or part without written authorization.

TOLERANCES: + 0.000"
- 1/16"

UNLESS OTHERWISE SPECIFIED
DIMENSIONS ARE IN INCHES.

DRAWN BY:
J. Wenzel

DATE:
08/02/04

PART NO.
XXX-XXX

JOB NO.
XXXXXXXX

REV:
1

MAGNUM FITNESS SYSTEMS
2201 12th. Avenue
S. Milwaukee, WI, 53172

TITLE: 2001 v 1.0
Hammer