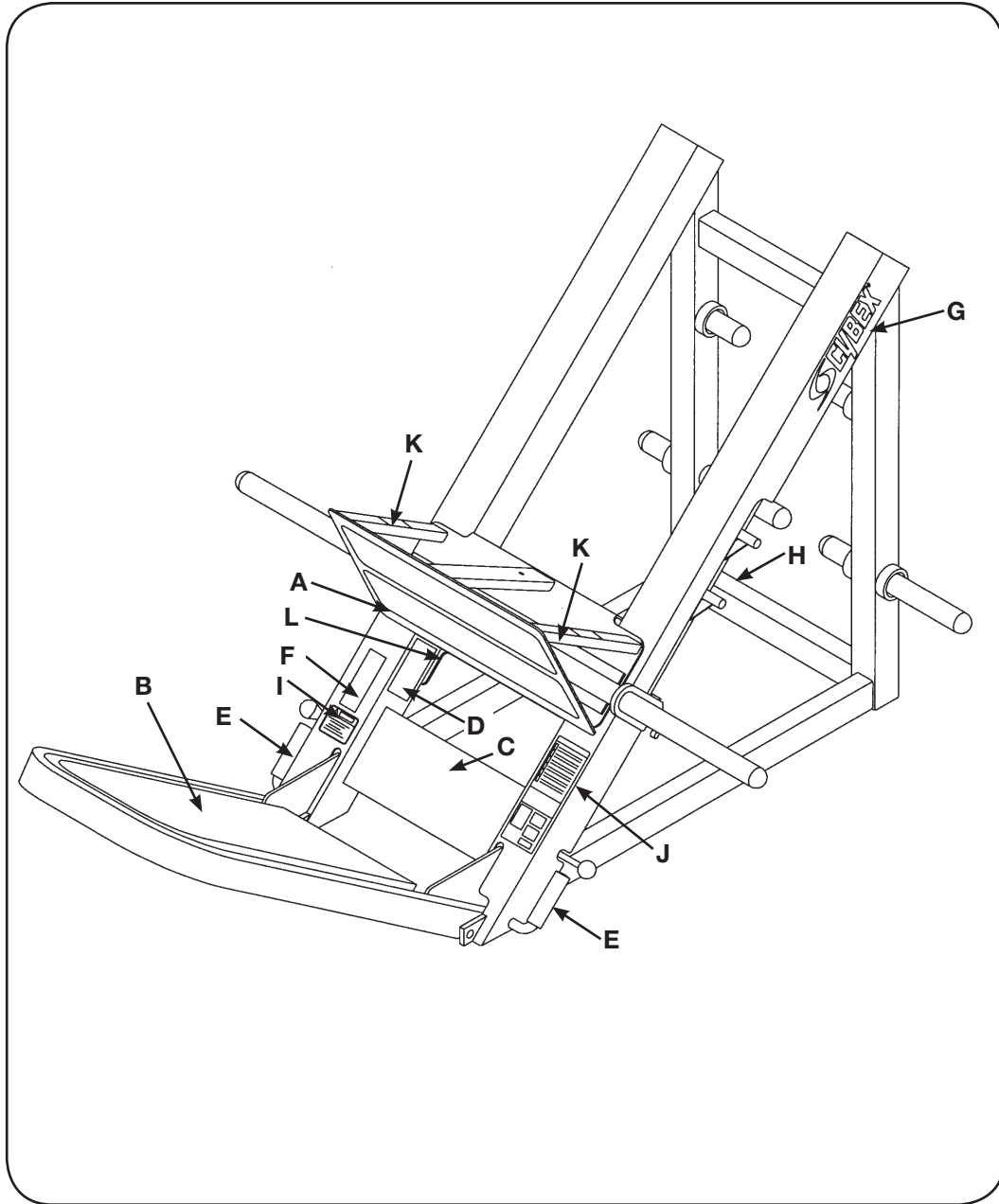


LEG PRESS

PRODUCT NO. 5321



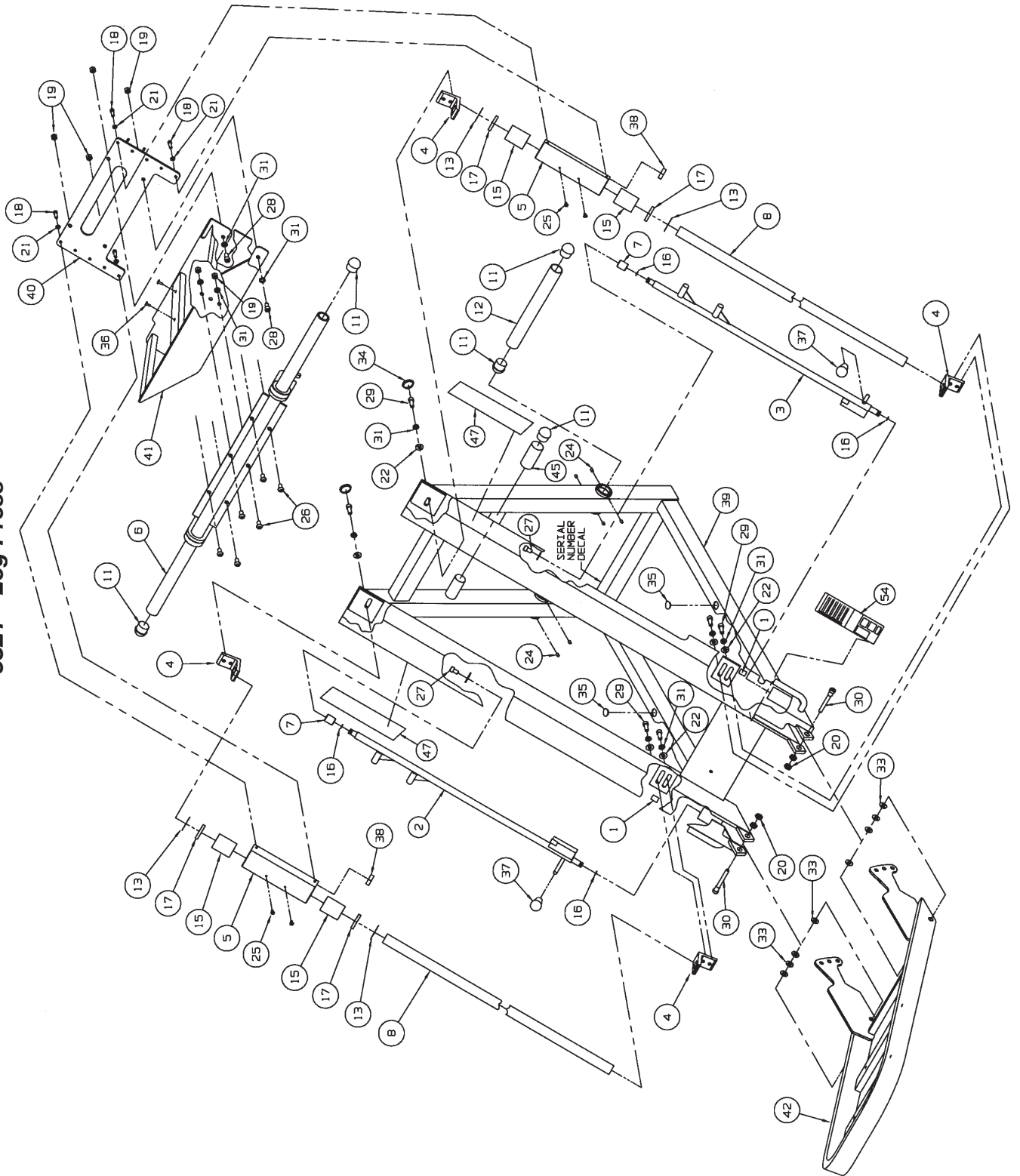
DESCRIPTION	PART NO.	DESCRIPTION	PART NO.
A. Non-slip Fabric	5320-300	H. Serial Number Decal	
B. Back Cushion	5321-011	I. Warning Decal	5320-346
C. Seat Cushion	5320-024	J. Placard	5320-347
D. Back Pad Adj. Decal	5320-336	K. Caution Decal	5220-337
E. Hand Grip	PR400204	L. Non-slip Fabric	5320-301
F. Warning Decal	5220-364		
G. Cybox Decal Black	3900-447		
G. Cybox Decal Silver	3900-448		

Cybox Plate Loaded Owner's Manual

5321 - Leg Press

ITEM	QTY	PART NO.	DESCRIPTION
1	2	4113M064	Bumper
2	1	5321-201	Left Hand Stop Rod
3	1	5321-202	Right Hand Stop Rod
4	4	5321-303	Angle
5	2	5320-204	Bearing Sleeve
6	1	5320-208	Weight Bar
7	2	5320-332	Stop Rod Collet
8	2	5321-302	Shaft 1.50 Dia. x 50.00 L
9	1	5320M042	Cable 17.00
10	2	5320P040	Detent Pin
11	8	5330M040	Plug
12	2	5330P029	Weight Tube
13	4	BR030203	Linear Bearing Retaining Ring 1.50
14	2	BS070201	Com Spring .56 x .66 x 1.50 L
15	4	FB110200	Linear Bearing 1.50
16	4	FS100006	O-Ring
17	4	FS110200	Linear Bearing Seal 1.50
18	10	HC702817	SHCS .375-16 x 1.00
19	10	HN784000	Hex Nut .500-13
20	4	HN814400	Jam Nut .625-11
21	10	HS348300	Split Lockwasher .375
22	6	HS387700	Washer SAE .50
23	4	HY582910	Set Screw #10-32 x .19 Cup Pt
24	8	HY622910	Set Screw .250-20 x .375
25	4	JC660412	BHSCS .312-18 x .50
26	6	JC780420	BHSCS .500-13 x 1.25
27	2	JC782815	SHCS .500-13 x .75
28	4	JC782817	SHCS .500-13 x 1.00
29	6	JC782820	SHCS .500-13 x 1.25
30	2	JD423338	S/Bolt .75 x 3.50 .625-11
31	16	JS388300	Split Lockwasher .50
32	2	JC700420	BHSCS .375-16 x 1.25
33	8	JS427600	Washer SAE .75
34	2	PP080201	Plastic Insert 1.75 Dia x 11 G
35	2	PP080202	Plastic Insert 1.19 Dia x 11 G
36	2	PP080207	Plastic Insert .437 Dia x 11 G
37	2	PP470006	Oval Knob
38	2	PU060201	Bumper
39	1	5320-200	Frame
40	1	5320-205	Side Plate
41	1	5320-206	Platform
42	1	5321-203	Seat
43	1	5320-301	Non-slip Fabric
44	4	HC700426	BHSCS .375-16 x 2.00
45	2	5330P012	Weight Tube 5.00
46			Removed 9/04
47	2	3900-447	Cybox Decal 1.94 Horiz. Black
47	2	3900-448	Cybox Decal 1.94 Horiz. Silver
47			Removed 7-03
48	2	5320-300	Non-slip Fabric
49	6	5220-367	Spacer
50	1	5321-011	Back Cushion
51	1	4600-023	Seat Cushion
52	1	5320-366	Back Pad Adjustment Decal
53	1	5320-346	Warning Decal
54	1	5321-598	Placard Decal
55	1	55321	Leg Press Bar Assembly Inst.
56	2	5220-337	Caution Decal
57	1	5220-364	Warning Decal
58	2	PR400204	Grip 4.78 L
59	1	51198	Strength Warranty Sheet (not shown)
60	6	JS347400	Internal Tooth Lockwasher

5321 - Leg Press



5321 - Leg Press

